

SECTION ONE

ST. LUCIE ESTATES SUBDIVISION

OF

PART OF GOV'T. LOTS 3 AND 4 IN SEC 3, TWP 38S R41E
ST. LUCIE PALM BEACH COUNTY FLORIDA

SCALE 50'=1"

State of Florida }
County of Palm Beach } 55

This is a True Copy of the Original Plat of Record of "ST. LUCIE ESTATES, 91A"
Plat Book 10, Page 70, Palm Beach County, Florida, Now MacDuff County.

Notary Public
REGISTERED LAND SURVEYOR
FLORIDA CERTIFICATE NO. 443

State of Florida }
County of Palm Beach } 55

This Instrument was filed for
Record at 5:24 this 5 day of December
1924 and duly recorded on the 5 day of
December 1924 in Book 10, of Plats
on Page 70. Signed Verified

Notary Public
CLERK CIRCUIT COURT
BY: DEPUTY CLERK

KNOW ALL MEN BY THESE PRESENTS that the undersigned the St. Lucie Estates Inc.
a corporation created and existing under the laws of the State of Florida are the owners in fee simple of the tract of land
hereon shown being part of Gov't. Lots 3 and 4 in Sec. 3, Township 38 South, Range 41 East containing 20 Acres more or less, and have caused
the same to be surveyed and platted and do hereby dedicate to the perpetual use of the public the streets, avenues and alleys hereon shown
Signed sealed and delivered in the presence of

Wm. H. Boat
W. S. Brown
W. S. Boat

St. Lucie Estates Inc.
owners.
by *Carroll Dunscombe* President
Attest *Gerald J. O'Reilly* Secretary

State of Florida }
County of Palm Beach } 55

Before me personally appeared *Carroll Dunscombe* and *Gerald J. O'Reilly* to me well known to be
the persons who executed the foregoing instrument and who acknowledge to and before me that they executed the same for the uses
and purposes herein expressed.

A.D. 1924 at St. Lucie, Florida.

In WITNESS WHEREOF I herewith set my hand and affix my official seal this Tenth day of Nov.

RIVER

J. A. Leigh Notary Public
My Commission expires April 9, 1927

State of Florida }
County of Palm Beach } 55

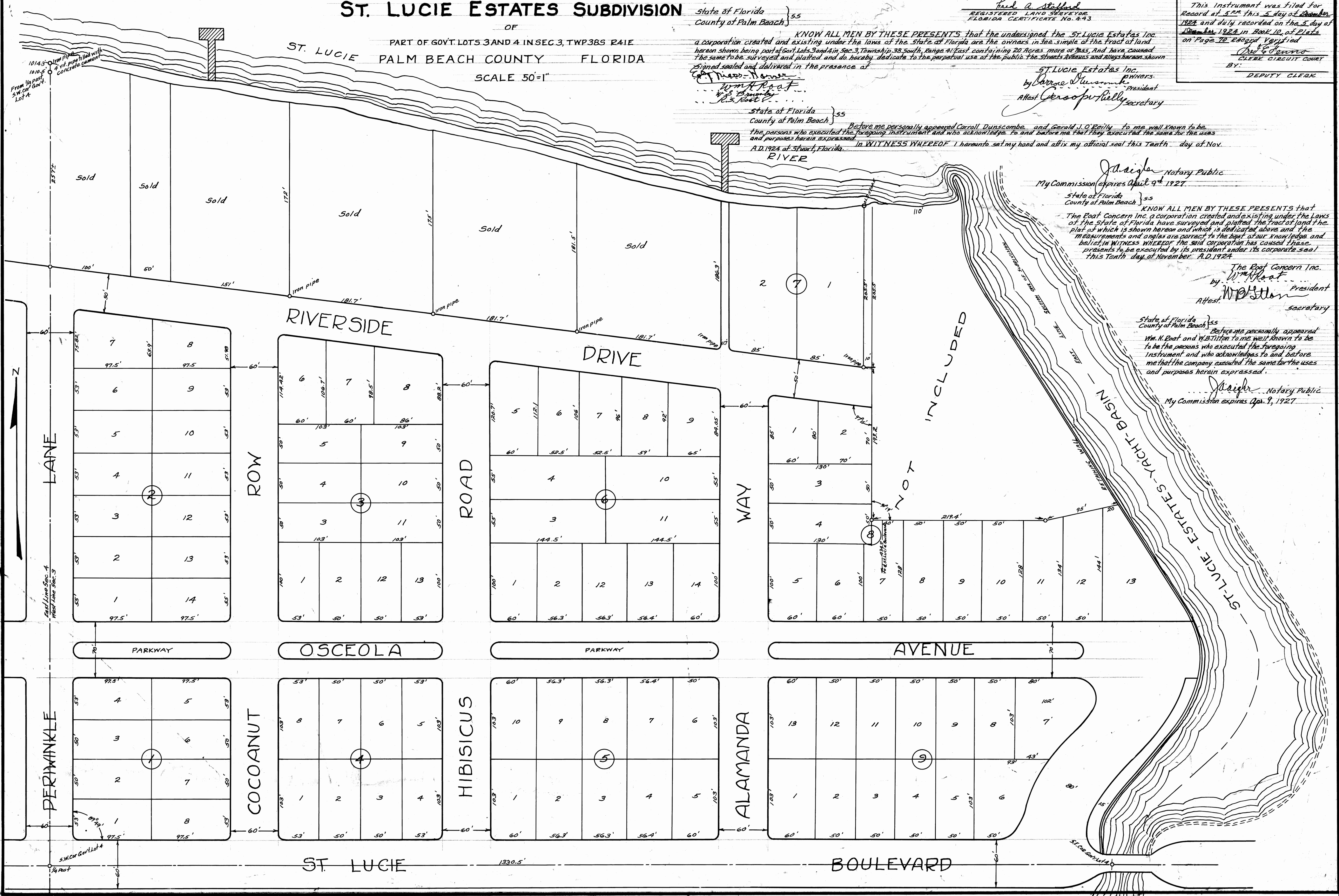
KNOW ALL MEN BY THESE PRESENTS that
The Boat Concern Inc. a corporation created and existing under the laws
of the State of Florida have surveyed and platted the tract of land the
plat of which is shown hereon and which is dedicated above and the
measurements and angles are correct to the best of our knowledge and
belief in WITNESS WHEREOF the said corporation has caused these
presents to be executed by its president under its corporate seal
this Tenth day of November, A.D. 1924.

The Boat Concern Inc.
by *Wm. H. Boat* President
Attest *W. S. Brown* Secretary

State of Florida }
County of Palm Beach } 55

Before me personally appeared
Wm. H. Boat and *W. S. Brown* to me well known to be
the persons who executed the foregoing
instrument and who acknowledge to and before
me that the company executed the same for the uses
and purposes herein expressed.

J. A. Leigh Notary Public
My Commission expires Apr. 9, 1927



INCLUDED

NOT

ST. LUCIE ESTATES - YACHT-BASIN

1014.3' from NW corner Gov't Lot 4
1010.5' from NW corner Gov't Lot 4
2.5" dia. iron pipe
concrete cement

LANE

RIVERSIDE DRIVE

DRIVE

ROW

ROAD

WAY

PARKWAY

OSCEOLA

PARKWAY

AVENUE

PERIWINKLE

COCONUT

HIBISCUS

ALAMANDA

ST. LUCIE

BOULEVARD